

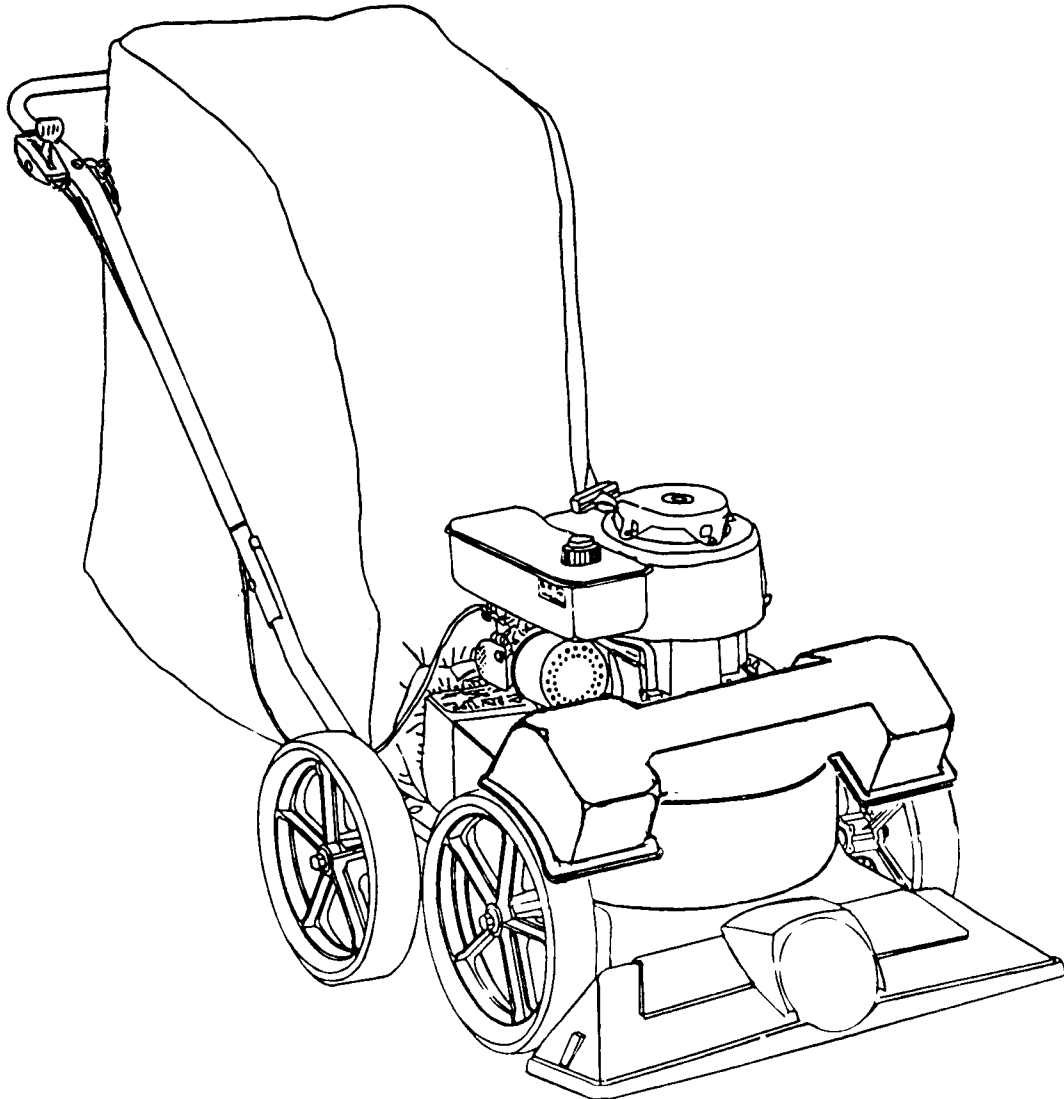
BILLY GOAT

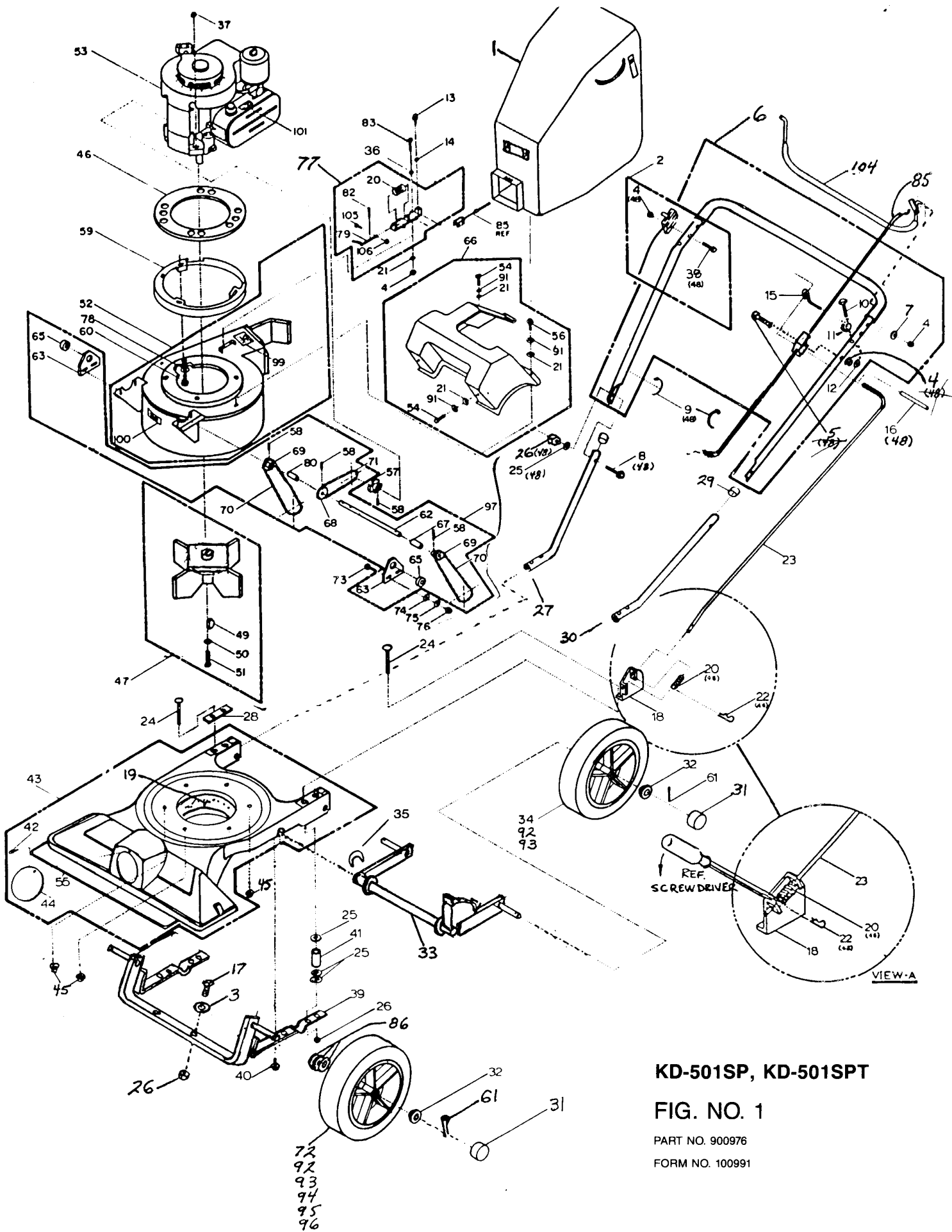
INDUSTRIES, INC.



vacuum cleaner

Models No. KD501SP
KD501SPT





KD-501SP, KD-501SPT

FIG. NO. 1

PART NO. 900976

FORM NO. 100991

KD-501 S.P., KD-501 S.P.T.

PARTS LIST

ITEM NO.	DESCRIPTION	KD-501 S.P.		KD-501 S.P.T.		ITEM NO.	DESCRIPTION	KD-501 S.P.		KD-501 S.P.T.	
		PART NO.	QTY.	PART NO.	QTY.			PART NO.	QTY.	PART NO.	QTY.
□ 1	DUST BAG (FELT) (RENTAL 900798) INCL. (2) OF 10, 11, 12	900803	1	900803	1	55	ROD BUMPER	900939	1	900939	1
2	THROTTLE ASSY (INCL. ITEMS (QTY.), 4(1), 38(1))	900514-02	1	900514-02	1	56	SCREW 1/4" NC x 1/2	*8041002	1	*8041002	1
3	WASHER FLAT FENDER (11/32 x 1 1/4 R.050)	*8172020	2	*8172020	2	57	CLUTCH-DOUBLE RELEASE	900307	1	900307	1
4	LOCKNUT 1/4-20 NC	*8160001	5	8160001	5	58	ROLL PIN 3/16 DIA. x 1 1/4 LG.	*8195166	4	*8195166	4
5	SCREW CAP 1/4-20 x 1 1/2	*8041008	1	*8041008	1	59	SPACER RING FULL ASSY	900304T	1	900304T	1
6	HANDLE ASSY (INCL. 2 EA. OF ITEMS 10, 11, 12)	900967	1	900967	1	60	CAPSCREW 3/8 NC x 2 1/2 HEX HD	900564	3	900564	3
7	WASHER FLAT CUT 1/4	*8171002	1	*8171002	1	61	PIN COTTER 3/32 x 3/4	*8197016	2	*8197016	2
8	SCREW CAP 5/16 NC x 1 1/2	*8041030	2	*8041030	2	62	JACKSHAFT	900320	1	900320	1
9	TY RAP	900407	4	900407	4	63	BEARING PLATE	900317	2	900317	2
10	SCREWCAP 1/4-20 x 1 1/2	*8041008	2	8041008	2	64					
11	ROD-BAG LOOP	800178	2	800178	2	65	BEARING-BALL WITH SNAP RING	900321	2	900321	2
12	LOCKNUT 1/4-20 NC	*8160001	2	8160001	2	66	CHAIN GUARD ASSY (INCL. 54, 56, 21, 91)	900218	1	900218	1
13	SCREW NO. 10-24 x 1/2 HEX. SELF THD.	*8123086	1	*8123086	1	67	SPACER-SHORT	900306	1	900306	1
14	WASHER NO. 10 SAE (7/32 ID x 1/2 OD x 1/16)	*8172005	1	*8172005	1	68	SPROCKET-17T	900303	1	900303	1
15	BOLT EYE	900913	1	900913	1	69	SPROCKET-8T	900302	2	900302	2
16	GRIP	900937	1	900937	1	70	CHAIN 48P	900324	2	900324	2
17	SCREW CAP 5/16 NC x 1 1/4	*8041029	2	*8041029	2	71	CHAIN 40P	900323	1	900323	1
18	BRACKET HT. ADJ.	900932	1	900932	1	72	WHEEL W/18T ASSY CAST (INCL. 92, 93, 94, 95, 96)	900512	2	900512	2
19	GUARD FOAM INSERT	900977	1	900977	1	73	BOLT-CARRIAGE 5/16 NC x 3/4"	*8024039	4	*8024039	4
20	SPRING	900136	1	900136	1	74	WASHER FLAT 5/16 (3/8 ID x 7/8 OD x 1/16)	*8171003	4	*8171003	4
21	WASHER 1/4" FLAT (5/16 ID x 3/4 OD x 1/16)	*8171002	7	*8171002	7	75	LOCK WASHER-5/16" SPRING	*8177011	4	*8177011	4
22	HAIRPIN COTTER	900471	1	900471	1	76	NUT 5/16" NC HEX.	*8142002	4	*8142002	4
23	ROD HT. ADJ.	900978	1	900978	1	77	BRACKET CONTROL ASSY (INCL. 78, 79, 20, 82, 105, 106)	900221	1	900221	1
24	CARRIAGE BOLT 5/16-18 NC x 3 1/2 LG.	8024050	4	8024050	4	78	WASHER-LOCK 3/8 INT.	*8180011	3	*8180011	3
25	WASHER 5/16" SAE (11/32 ID x 11/16 OD x 1/16)	*8172008	14	8172008	14	79	ROD CLUTCH	900208	1	900208	1
26	LOCKNUT 5/16" -18 NC HEX	*8160002	8	8160002	8	80	SPACER-LONG	900305	1	900305	1
27	HANDLE STUB (R.H.)	900911	1	900911	1	81					
28	PLATE HANDLE SUPPORT	900933	1	900933	1	82	ROLL PIN 1/8" DIA. x 1 1/4" LG.	9195106	1	9195106	1
29	CAP END 1" ID	800392	2	800392	2	83	CAP SCREW 1/4" NC x 1" LG. HEX.	*8041006	2	*8041006	2
30	HANDLE STUB (L.H.)	900912	1	900912	1	84					
31	CAP HUB	900486	4	900486	4	85	CABLE ASSY-CLUTCH	900207	1	900207	1
32	WASHER HUB CAP 1/2 ID	900927	4	900927	4	86	WASHER 1/2 (17/32 ID x 1 1/16 OD x 3/32)	*8172011	6	*8172011	6
33	REAR AXLE FRAME WELDMENT+	900956	1	900956	1	87					
34	WHEEL ASSY CAST (INCL. 92, 93) 12" x 2.5" OFFSET	900509	2	900509	2	88					
35	WASHER 0.75 "C"	900997	1-0	900977	1-0	89	CONTROL ASSY HT-ADJ (INCL. 15, 4, 8, 12)	900155	1	900155	1
36	CLIP-CABLE CLUTCH	900999	1	900999	1	90					
37	NUT 3/8-16 NC HEX LOCK+	*8160003	3	*8160003	3	91	WASHER LOCK 1/4	*8177010	4	*8177010	4
38	SCREWCAP (1/4-20 NC x 1 3/4 HEX)	8041009	1	8041009	1	92	TIRE-ONLY (PER ASSY)	900507	1	900507	1
39	FRONT FRAME W.A.	900960	1	900960	1	93	BEARING ONLY (PER ASSY)	900498	2	900498	2
40	SCREW CAP W.F. SEMS 1/4" NC x 3/4"	900450	4	900450	4	94	SPROCKET (PER ASSY)	900501	1	900501	1
41	SPACER	900926	4	900926	4	95	SCREW TAP 1/4-14 x 3/4 (PER ASSY)	900505	5	900505	5
42	SCREW NO. 10-24 NC x 1/2 LG. SELF TAPPING	*8123086	1	8123086	1	96	WASHER-LOCK EXT. 1/4 (PER ASSY)	*8181007	5	*8181007	5
43	NOZZLE MAIN FRAME ASSY (INCL. (1) ITEM 42,44,55,19)	900966	1	900966	1	97	JACKSHAFT ASSY (INCL. 58, 62, 63, 65, 67, 68, 69)	900322	1	900322	1
44	PLUG	900146	1	900146	1	98					
45	LOCKNUT 5/16" -18 NC HEX LT. WT. THIN	850164	6	850164	6	99	LABEL HANDS AND FEET	900326	1	900326	1
46	GASKET	800411	1	800411	1	100	LABEL-CAUTION GUARDS	900327	1	900327	1
47	IMPELLER ASSY (INCL. 49, 50, 51)	900342-S	1	900342-S	1	101	LABEL-DO NOT FILL	400268	1	400268	1
48	PARTS BAG ASSY (INCL. ITEM 30, 31, 16, 8(2), 9, 25(2), 26(2), 20, 22)	900974	1	900974	1	102					
49	KEY WOODRUFF NO. 6 (5/32 x 5/8)	900162	2	900162	2	103					
50	LOCKWASHER 3/8" TWISTED TOOTH	400502	1	400502	1	104	ROD BAIL CLUTCH ASSY (INCL. GRIP)	900969	1	900969	1
51	CAP SCREW (HARDENED) 3/8" N.F. x 1 1/2" HEX (TORQUE 50 FT. LBS.)	900344	1	900344	1	105	SCREW MACH. NO. 6 x 3/4 LG. HEX WASHER FACE GR 5	*8120032	1	*8120032	1
52	HOUSING ASSY (INCL. 1 EA. OF ITEMS 61, 84, 87, 99, 100)	900586	1	900586	1	106	NUT-LOCK NO. 6	*8164003	1	*8164003	1
53	ENGINE	900619	1	900168T	1						
54	CAPSCREW 1/4 NC x 3/4	*8041004	3	*8041004	3						

*STANDARD HARDWARE ITEM—MAY BE PURCHASED LOCALLY.

+ NEW AXLES, ITEM 33, SERIAL NOS. 35101 THRU 35600 & 36074 & UP

□ SERVICE ZIPPER NO. 900478 & SERVICE STRAP ASSY NO. 900606

HOSE KITS 4" HOMEOWNERS KIT 900942 & 4" HEAVY DUTY KIT 900943

HOSE KITS 900700 & 900006 CAN BE USED ON KD-501 MODELS.

PART NO. 900976