

**2** **OPTIONAL ACCESSORIES**

**INTAKE**

**HOSE KIT TR P/N 810509** Standard on TR units. [8"(203mm) x 12.5' (3.8m)]

**HOSE KIT HTR P/N 810696** Standard on HTR units. [10"(254mm) x 12.5' (3.8m)]

**HOSE COUPLER KIT 8" (203mm) TR P/N 810525** Quick release coupler joins 2 hoses together to increase vacuuming distance and allows hoses to be separated for storage.

**HOSE CONNECTOR KIT 8" (203mm) TR P/N 810524**

**HOSE CONNECTOR KIT 10" (254mm) HTR P/N 810776**

For permanently connecting 2 hoses together to increase vacuuming distance .

**EXHAUST ALL MODELS**

**EXHAUST EXTENSION KIT P/N 810637** Increases exhaust height 11"(280mm) for loading debris into elevated locations.

**EXHAUST HOSE KIT P/N 810508** [7"(178mm) x 12.5' (3.8m)] Quick release coupler and hose increases exhaust distance.

**EXHAUST HOSE COUPLER KIT P/N 810506** [7"(178mm)] Quick release coupler joins 2 hoses together to increase vacuuming distance and allows hoses to be separated for storage.

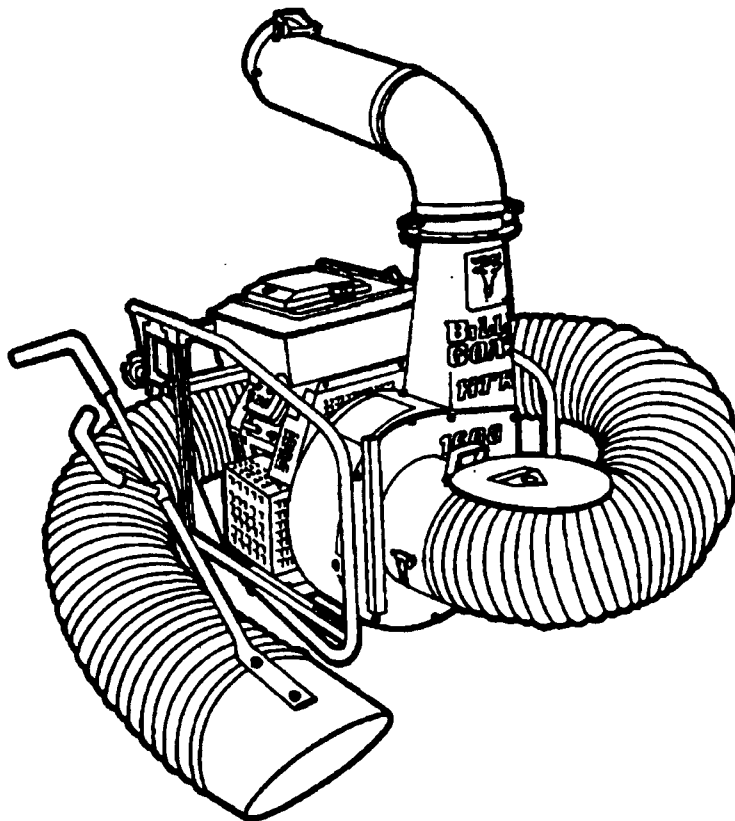
**EXHAUST HOSE CONNECTOR KIT P/N 810510** [7"(178mm)] Permanently joins 2 exhaust hoses together to increase exhaust distance.

**PANEL FILTER KIT P/N 810584** Provides air filter panel for use on truck and trailer mounted debris enclosures.

**PORTABLE DEBRIS BAG P/N 810660** 1.3 yds.<sup>3</sup> (1.0m<sup>3</sup>) or 28.4 bushels (1000L). For portable use. Several bags can be filled and left for later pickup.

**MOUNTING ALL MODELS**

**TRAILER HITCH MOUNT KIT P/N 810990** Mounts Truck Loaders to any vehicle with a standard 2" square (Class 3) hitch receiver.



*Thank You for Selecting*  
**The Powerful TRUCK LOADER VACUUM**

# Operator Owner's Manual

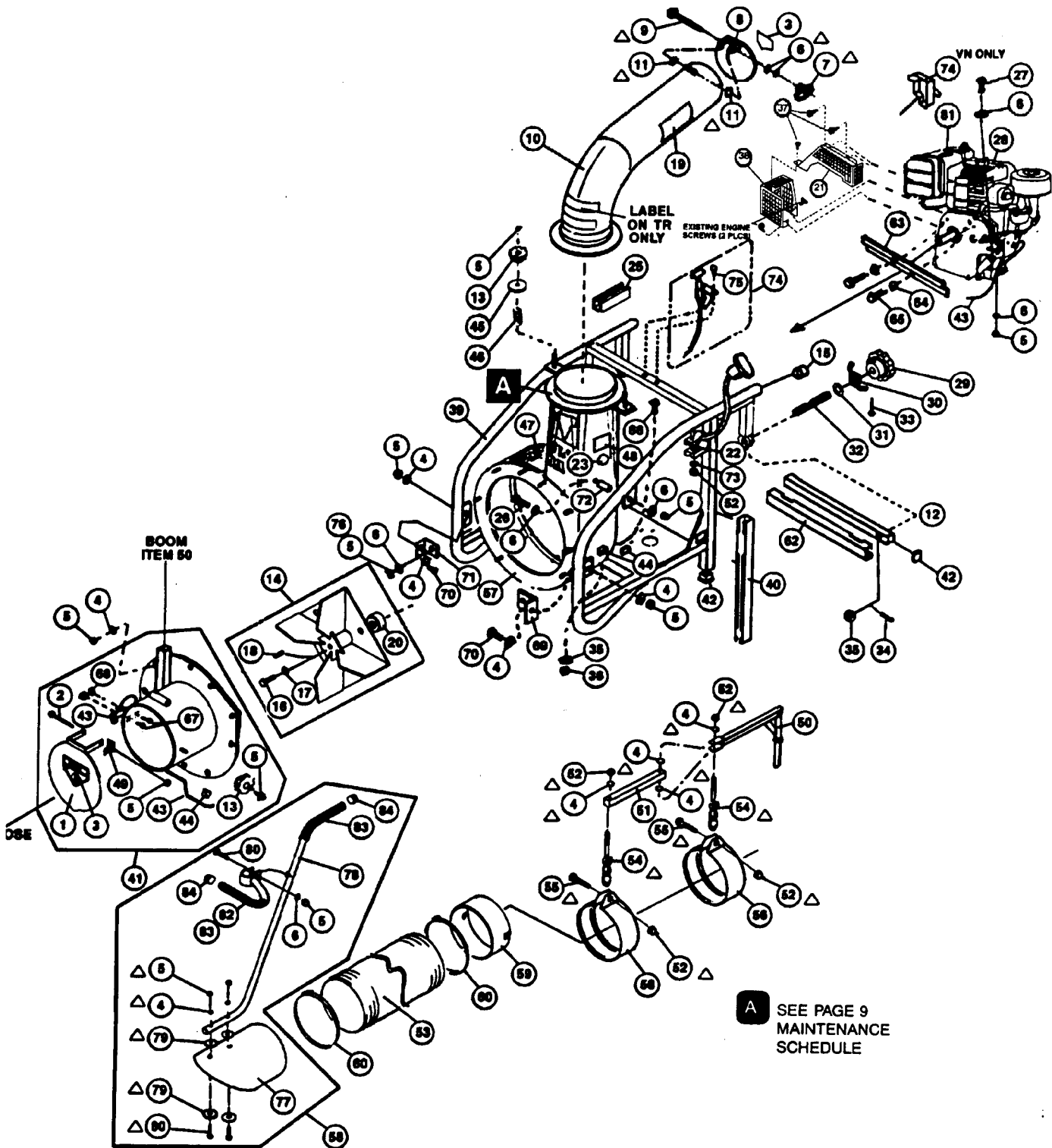
**HTR1600VN, TR1102H,  
TR1102**

**3**

## Specifications

	HTR1600VN	TR1102H	TR1102
ENGINE: H.P.	16 H.P. TWIN OHV VANGUARD GUARD	11.0 HP (9.04 kW)	11.0 HP (9.04 kW)
ENGINE: WEIGHT	79 lbs. (35.83 kg)	68.4 lbs. (31 kg)	64.25 lbs. (29.1 kg)
ENGINE: TYPE	Briggs & Stratton 4 Cycle IC Twin	HONDA 4 cycle	B & S 4 cycle IP
ENGINE: FUEL CAPACITY	9 qt. (8.52 L), Float feed carb. & fuel pump	6.9 qt. (6.0 L)	6.0 qt. (5.7 L)
ENGINE: OIL CAPACITY	1.75 qt. (1.66 L), Oil pump w/filter	1.16 qt. (1.1 L)	1.5 qt. (1.42 L)
	UNIT SHIP	UNIT SHIP	UNIT SHIP
UNIT WEIGHT:	208 lb (94.5 kg)	183 lb (83 kg)	179 lb (81 kg)
NOZZLE KIT WEIGHT:	8 lb (3.6 kg)	7 lb (3 kg)	7 lb (3 kg)
UNIT & NOZZLE WEIGHT:	216 lb (97.9 kg)	190 lb (86 kg)	186 lb (84 kg)
HOSE WEIGHT:	30 lb (13.6 kg)	26 lb (12 kg)	26 lb (12 kg)
TOTAL WEIGHT (2 cartons):	246 lb (111.7 kg)	216 lb (98 kg)	212 lb (96 kg)
		252 lb (114 kg)	248 lb (112 kg)

UNIT SIZE: OVERALL LENGTH: HTR 36.5"(0.93m) / TR 35"(0.89m) OVERALL WIDTH: 24.25" (0.62m) OVERALL HEIGHT: 44" (1.12m)



A SEE PAGE 9  
MAINTENANCE  
SCHEDULE

Item No.	Description	HTR1600VN		TR1102H		TR1102	
		Part No.	Qty	Part No.	Qty	Part No.	Qty
1	FLAPPER 10" INTAKE W/LABEL	810956	1	- - -	- -	- - - -	- -
	FLAPPER 8" INTAKE W/LABEL	- - -	- -	810558	1	810558	1
2	SCREW CAP 5/16-18 x 3 1/4	*8041037	1	*8041037	1	*8041037	1
3	LABEL DANGER KEEP HANDS AND FEET AWAY	400424	2	400424	2	400424	2
4	WASHER 5/16 SAE (11/32 ID x 11/16 OD x 1/16)	*8172008	19	*8172008	14	*8172008	14
5	NUT LOCK 5/16-18	*8160002	23	*8160002	18	*8160002	18
6	WASHER 5/16 FLAT CUT (3/8 I.D. x 7/8 O.D. x 1/16)	*8171003	14	*8171003	14	*8171003	10
7	KNOB (EXHAUST)	900456	1	900456	1	900456	1
8	FLAPPER 7" EXHAUST W/LABEL	810958	1	810958	1	810958	1
9	CARRIAGE BOLT 5/16-18 x 3 1/2	*8024050	1	*8024050	1	*8024050	1
10	ELBOW HTR / TR EXHAUST W/LABELS	810957	1	810957	1	810957	1
11	LOCK WASHER 5/16 EXT.	*8181008	2	*8181008	2	*8181008	2
12	TUBE CLAMP	810953	1	810953	1	810953	1
13	KNOB	400339	3	400339	3	400339	3
14	IMPELLER ASSY (INCLUDES 16(1), 17(1), 18(1), 20(1))	810930	1	810974	1	810629	1
15	CAP END	800392	2	800392	2	800392	2
16	SCREW CAP 3/8-24 x 2" GR 8 [50 Ft. Lbs. (68 N.m)]	810962	1	- - -	- -	- - -	- -
	SCREW CAP 3/8 - 24 X 2 1/4 GR 8 [50 Ft. Lbs. (68 N.m)]	- - -	- -	810932	1	- - -	- -
	SCREW CAP 7/16 - 20 X 1 1/4 GR 5 [60 Ft. Lbs. (81.4 N.m)]	- - -	- -	- - -	- -	800554	1
17	WASHER LOCK 3/8 TWISTED TOOTH	400502	1	400502	1	- - -	- -
	WASHER LOCK 7/16 TWISTED TOOTH	- - -	- -	- - -	- -	850132	1
18	KEY SQ. 1/4 x 2 3/4	*9201125	1	*9201125	1	- - -	- -
	KEY SQ. 1/4 X 2 1/4	- - -	- -	- - -	- -	*9201123	1
19	LABEL DANGER FLYING MATERIAL	810736	2	810736	2	810736	2
20	SPACER IMPELLER	830112	1	830112	1	- - -	- -
21	GUARD MANIFOLD	811059	1	- - -	- -	- - -	- -
22	GUIDE STARTER ROPE	830297	2	830297	2	830297	2
23							
24	PARTS BAG ASSY (INCL. 4(6), 5(3), 6(3), 7, 9, 11(2), 23, 52(4), 54(2), 55(2), 79(4), 80(2))	810935	1	810935	1	810935	1
25	PAD CHANNEL TOP HTR	810950	2	810950	2	810950	2
26	CARRIAGE BOLT 5/16-18 x 1 3/4	*8024043	1	- - -	- -	- - -	- -
	CARRIAGE BOLT 5/16-18 x 3 1/2	- - -	- -	*8024050	1	*8024050	1
27	SCREW CAP 5/16-18 x 1 3/4	*8041031	4	*8041031	4	*8041031	4
28	ENGINE 16 H.P. VN W/CONTROL PANEL	810099	1	- - -	- -	- - -	- -
	ENGINE HONDA 11HP	- - -	- -	400931	1	- - -	- -
	ENGINE BRIGGS 11 HP INDUSTRIAL PLUS	- - -	- -	- - -	- -	430250	1
29	KNOB	850154	2	850154	2	850154	2
30	NUT LOCK W.A.	800227	2	800227	2	800227	2
31	WASHER 3/4, PLASTIC	800109	2	800109	2	800109	2
32	STUD 3/4 - 10 x 5 1/2	810954	2	810954	2	810954	2
33	SCREW MACHINE #10-24 x 2	*8059143	2	*8059143	2	*8059143	2
34	PIN COTTER 1/8 x 1"	*8197031	2	*8197031	2	*8197031	2
35	WASHER 3/8 SAE	*8172009	4	*8172009	4	*8172009	4
36	NUT LOCK 3/8-16	*8160003	2	*8160003	2	*8160003	2
37	SCREW SHEET METAL 1/4 AB x 3/4	*8122082	3	- - -	- -	- - -	- -
38	GUARD MUFFLER	811058	1	- - -	- -	- - -	- -
39	FRAME W.A. HTR / TR	810940	1	810940	1	810940	1
40	PAD CHANNEL 1" x 18 1/2"	810949	2	810949	2	810949	2
41	PLATE FRONT 10" HTR W/INTERLOCK (INCL. 1, 2, 5(2), 13, 43, 44, 49, 87, 88)	810919	1	- - -	- -	- - -	- -
	PLATE FRONT 8" TR W/INTERLOCK (INCL. 1, 2, 5(2), 13, 43, 44, 49, 87, 88)	- - -	- -	810984	1	810975	1
42	PLUG CAP 1" SQUARE	810535	4	810535	4	810535	4
43	CABLE ASSY INTERLOCK	810922	1	810983	1	810595	1
44	CLIP-CABLE LIFT	850200	3	850200	3	850200	3
45	WASHER-EXTENSION	810652	2	810652	2	810652	2
46	SPRING	400332	2	400332	2	400332	2
47	LABEL CAUTION	830138	1	830138	1	830138	1
48	LABEL EAR EYE BREATHING	890254	1	890254	1	890254	1
49	BRACKET STOP FLAPPER	810941	1	810941	1	810941	1
50	BOOM-PIVOT W.A.	810870	1	810870	1	810870	1
51	TUBE-SQUARE BOOM ARM	810875	1	810875	1	810875	1
52	NUT LOCK 1/4-20	*8160001	5	*8160001	5	*8160001	5
53	HOSE 10" x 12.5' HTR (COMES IN SEPERATE BOX)	810705	1	- - -	- -	- - -	- -
	HOSE 8" x 12.5' TR (COMES IN SEPERATE BOX)	- - -	- -	810523	1	810523	1
54	CHAIN-LOOP ASSY	810878	2	810878	2	810878	2
55	SCREW CAP 1/4-20 x 1 3/4	*8041009	2	*8041009	2	*8041009	2
56	BAND HOSE BOOM 10" HTR	810868	2	- - -	- -	- - -	- -
	BAND HOSE BOOM 8" TR	- - -	- -	810880	2	810880	2
57	HOUSING ASSY W/LABELS (INCLUDES 9(2), 13(2), 45(2), 46(2), 47, 48)	810912	1	810976	1	810976	1
59	NOZZLE ASSY 10" HTR (INCL. 4(2), 5(3), 6, 23, 77, 79(4), 80(2), 82, 83, 84)	811010	1	- - -	- -	- - -	- -
	NOZZLE ASSY 8" TR (INCL. 4(2), 5(3), 6, 23, 77, 79(4), 80(2), 82, 83, 84)	- - -	- -	811009	1	811009	1
59	COUPLER W.A. 10" HOSE HTR	810761	1	- - -	- -	- - -	- -
	COUPLER W.A. 8" TR	- - -	- -	810570	1	810570	1
60	CLAMP HOSE 10" HTR	810706	2	- - -	- -	- - -	- -
	CLAMP HOSE 8" TR	- - -	- -	810566	2	810566	2
61							
62	PAD CHANNEL CLAMP TUBE	810952	1	810952	1	810952	1
63	SUPPORT PLATE ENGINE / SPACER ENG.	810927	1	810965	1	- - -	- -

\* Denotes standard hardware item that may be purchased locally.

△ Denotes parts found in parts bag assembly.