

*Thank You for Selecting
The Powerful QL Series Truck Loader Vacuum*

Operator Owner's Manual QL2300KOEU

Specifications

QL2300KOEU

ENGINE HP(kW)	23 HP (17.14kW) TWIN OHV VANGUARD
ENG. WEIGHT	90# (40.8 kg)
ENG. TYPE	TWIN OHV KOHLER ELECTRIC START
MODEL NO.	PA-76559
FUEL CAPACITY	8 qt (7.57L) Remote Tank, Oil Pump
OIL CAPACITY	2.0 qt. (1.9L)
UNIT (w/ hose boom) WEIGHT	313# (142.0 kg)
ELBOW WEIGHT	40# (18.1 kg)
HOSE (w/ nozzle) WEIGHT	39# (17.7 kg)
TOTAL WEIGHT	392 lb (177.8 kg)
SHIPPING WT.	476 lb (215.9 kg)

BATTERY NOT INCLUDED: **REQUIRES 12 V BATTERY, 40 AH, 240 CCA MIN. U1 SERIES GROUP BATTERY FOR PROPER FIT**

UNIT SIZE (ASSEMBLED W/EXHAUST, NO HOSE):	OVERALL LENGTH: 58" (1.47m)
OVERALL WIDTH: 32" (0.81m)	OVERALL HEIGHT: 74" (1.82m)

Optional Accessories

INTAKE

HOSE REPLACEMENT KIT P/N 810776
Standard on QL2300KOEU units. [10"(254mm)] diameter.

EXHAUST

EXHAUST HOSE KIT P/N 790114
[8"(203mm) x 5' (1.5m)] Quick release coupler and flexible steel hose increases exhaust distance.

TRAILER

TRAILER QL P/N 790112
Heavy duty spring axle trailer designed for towing your QL. Allows unit to be mounted for pickup from rear and both sides.

IN THE INTEREST OF SAFETY



BEFORE STARTING ENGINE, READ AND UNDERSTAND THE "ENTIRE OPERATOR'S MANUAL & ENGINE MANUAL."



THIS SYMBOL MEANS WARNING OR CAUTION. DEATH, PERSONAL INJURY AND/OR PROPERTY DAMAGE MAY OCCUR UNLESS INSTRUCTIONS ARE FOLLOWED CAREFULLY.



WARNING!

The engine exhaust from this product contains chemicals known to the State of California to cause cancer, birth defects or other reproductive harm.

WARNING: DO NOT

1. **DO NOT** run engine in an enclosed area. Exhaust gases contain carbon monoxide, an odorless and deadly poison.
2. **DO NOT** place hands or feet near moving or rotating parts.
3. **DO NOT** store, spill or use gasoline near an open flame, or devices such as a stove, furnace, or water heater which use a pilot light or devices which can create a spark.
4. **DO NOT** refuel indoors where area is not well ventilated. Outdoor refueling is recommended.
5. **DO NOT** fill fuel tank while engine is running. Allow engine to cool for 2 minutes before refueling. Store fuel in approved safety containers.
6. **DO NOT** remove fuel tank cap while engine is running.
7. **DO NOT** operate engine when smell of gasoline is present or other explosive conditions exist.
8. **DO NOT** operate engine if gasoline is spilled. Move machine away from the spill and avoid creating any ignition until the gasoline has evaporated.
9. **DO NOT** transport unit with fuel in tank.
10. **DO NOT** smoke when filling fuel tank.
11. **DO NOT** choke carburetor to stop engine. Whenever possible, gradually reduce engine speed before stopping.
12. **DO NOT** run engine at excessive speeds. This may result in injury & /or damage to unit.

13. **DO NOT** tamper with governor springs, governor links or other parts which may change the governed engine speed.
14. **DO NOT** tamper with the engine speed selected by the engine manufacturer.
15. **DO NOT** check for spark with spark plug or spark plug wire removed. Use an approved tester.
16. **DO NOT** crank engine with spark plug removed. If engine is flooded, place throttle in "FAST" position and crank until engine starts.
17. **DO NOT** strike flywheel with a hard object or metal tool as this may cause flywheel to shatter in operation. Use proper tools to service engine.
18. **DO NOT** operate engine without a muffler. Inspect periodically and replace, if necessary. If engine is equipped with muffler deflector, inspect periodically and replace, if necessary, with correct deflector.
19. **DO NOT** operate engine with an accumulation of grass, leaves, dirt or other combustible material in the muffler area.
20. **DO NOT** use this engine on any forest covered, brush covered, or grass covered unimproved land unless a spark arrester is installed on the muffler. The arrester must be maintained in effective working order by the operator. In the State of California the above is required by law (Section 4442 of the California Public Resources Code). Other states may have similar laws. Federal laws apply on federal lands.

21. **DO NOT** touch hot muffler, cylinder, or fins because contact may cause burns.
22. **DO NOT** run engine without air cleaner or air cleaner cover.
23. **DO NOT** operate during excessive vibration!
24. **DO NOT** leave machine unattended while in operation.
25. **DO NOT** park machine on a steep grade or slope.

WARNING: DO

1. **ALWAYS DO** remove the wire from the spark plug when servicing the engine or equipment TO PREVENT ACCIDENTAL STARTING.
2. **DO** keep cylinder fins and governor parts free of grass and other debris which can affect engine speed.
3. **DO** pull starter cord slowly until resistance is felt. Then pull cord rapidly to avoid kickback and prevent hand or arm injury.
4. **DO** examine muffler periodically to be sure it is functioning effectively. A worn or leaking muffler should be repaired or replaced as necessary.
5. **DO** use fresh gasoline. Stale fuel can gum carburetor and cause leakage.
6. **DO** check fuel lines and fittings frequently for cracks or leaks. Replace if necessary
7. **Follow** engine manufacturer operating and maintenance instructions.
8. **Inspect** machine and work area before starting unit.

TABLE OF CONTENTS

SAFETY INSTRUCTIONS	2
GENERAL SAFETY	3
ASSEMBLY	3
PARTS BAG & CONTROLS	4
LABELS	4
OPERATION	5 - 7
MAINTENANCE	8 - 9
PARTS DRAWING & LIST	10 - 11
TROUBLESHOOTING	12
WARRANTY	12

SOUND

Sound tests conducted were in accordance with 2000/14/EEC and were performed on 4/13/2004 under the conditions listed:

NOTE: Sound power level listed is the highest value for any model in this manual. Please refer to serial plate on the unit for the sound power level for your model.

Sound level of 89 dBA at operator position



110 dB

GENERAL CONDITION:	Sunny
TEMPERATURE:	50.5° F (10.3° C)
WIND SPEED:	0.5 MPH (0.8 kmh)
WIND DIRECTION:	North West
HUMIDITY:	39 %
BAROMETRIC PRESSURE:	30.18" Hg (767mm Hg)

VIBRATION

VIBRATION LEVEL 0.02g

Vibration levels at the operators handles were measured in the vertical, lateral, and longitudinal directions using calibrated vibration test equipment. Tests were performed on 05/07/98 under the conditions listed:

GENERAL CONDITION:	Partly Cloudy
TEMPERATURE:	69° F (20.6° C)
WIND SPEED:	8 MPH (12.8 kmh)
WIND DIRECTION:	N
HUMIDITY:	76 %
BAROMETRIC PRESSURE:	29.71" Hg (755mm Hg)

GENERAL SAFETY

For your safety and the safety of others, these directions should be followed:



Do not operate this machine without first reading owner's manual and engine manufacturer's manual.



Use of Ear Protection is recommended while operating this machine.



Use of Eye and Breathing protection is recommended when using this machine, especially in dry and dusty conditions.

- DO NOT place hands or feet inside nozzle intake opening, near debris outlet or near any moving parts.
- DO NOT start engine without hose and exhaust elbow connected firmly in place to housing and exhaust outlet.
- DO NOT allow children to operate this equipment.
- DO NOT operate without discharging exhaust into enclosed container.

- DO NOT operate during excessive vibration.
- DO NOT remove hose until engine has been turned off and has come to a complete stop.
- DO NOT operate machine with hose or exhaust elbow removed.
- DO NOT use this machine for vacuuming **exclusively** sand, dust, fine dirt, rock, glass, string like material, grain, rags, cans, metal, bark or water.
- DO NOT operate this machine on slopes greater than 45%(25°).
- DO NOT pick up any hot or burning debris, or any toxic or explosive material.
- DO NOT operate this unit freestanding. Unit must be secured in place during any operation.

ASSEMBLY



Read all safety and operating instructions before assembling or starting this unit.



PUT OIL IN ENGINE BEFORE STARTING.

BATTERY NOT INCLUDED WITH UNIT.

Your Billy Goat is shipped from the factory in one carton and is completely assembled except for the exhaust elbow, nozzle, handle loop for nozzle, hose boom, hose band, hose coupler, hose clamps and related hardware.

1. **SECURELY ATTACH** unit to the bed of a truck or to a trailer, so that the exhaust discharges into an enclosed container. **NOTE:** This unit must be securely mounted to the bed of a truck or to a trailer before operating.
2. **ATTACH** hose to hose coupler, using hose clamp (item 26) **NOTE:** This unit is equipped with a unidirectional hose. Assemble hose so that interior hose material seams face toward unit. Refer to flow direction arrow printed on outside of hose. When installed arrow should point toward vac housing.
3. **ATTACH** hose coupler w/hose to housing intake, that is preassembled to housing front plate, and rotate to lock it in place.

4. **ASSEMBLE** handle loop nozzle (item 45), to nozzle handle (item 44) using capscrew (item 52), and lock nut (item 60). Adjust handle loop to desired height and angle and securely tighten in place.
5. **ASSEMBLE** nozzle handle (item 44), to nozzle (item 25), using screws (item 52), washers (item 66), washers (item 68) and lock nuts (item 60).
8. **ATTACH** assembled nozzle to hose using hose clamp (item 26). Before tightening hose clamp, position nozzle handle upward when hose is stretched to prevent twisting load on hose assembly during operation.
9. **ATTACH** preassembled hose boom on top of housing using a hitch pin (item 10).
10. **ASSEMBLE** hose band (item 29) around hose and secure chain between flanges of the hose band using capscrew (item 85) and lock nut (item 59) Repeat same steps on the other chain. (see ADJUSTING HOSE BOOM on page 6).
11. **SECURELY ATTACH** exhaust elbow (item 21) capturing both flanges inside the clamp, then firmly tighten the clamp, securing the elbow to the housing (see MOUNTING on page 5).
12. **ASSEMBLE** battery (not included) by using battery bracket QL (item no. 70, hold down rods (item 71), washers (item 65), and lock nuts (item 59).
13. **ATTACH** red battery cable to + terminal and black battery cable to - terminal.

PACKING CHECKLIST

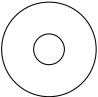
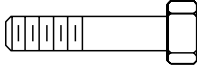
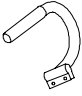
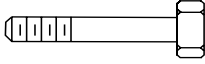


NOTE: BATTERY IS NOT INCLUDED. REQUIRES 12 V BATTERY, 40 AH, 240 CCA MIN. U1 SERIES GROUP BATTERY FOR PROPER FIT

Boxing Checklist	
<input type="checkbox"/>	Exhaust Elbow Assembly
<input type="checkbox"/>	Handle Loop Nozzle 811019
<input type="checkbox"/>	Handle Nozzle 811020
<input type="checkbox"/>	Nozzle 10" 811005
<input type="checkbox"/>	Hose Clamps 10" (254mm) 810706 Qty. 2
<input type="checkbox"/>	Hose Boom Assembly
<input type="checkbox"/>	Hose Coupler Assy
<input type="checkbox"/>	Parts Bag & Literature Assy 790319
<input type="checkbox"/>	Hose 10"x 12.5' 810705
<input type="checkbox"/>	KOHLER COMMAND PRO 23HP
<input type="checkbox"/>	Band Hose Boom 10" (254mm) 810868 Qty. 2

△ Denotes parts found in Parts Bag Assembly (shown on page 4).
These items should be included in your carton. If any of these parts are missing, contact your dealer.

PARTS BAG & LITERATURE ASSY

△ PARTS BAG ASSEMBLY CHECKLIST P/N 790229

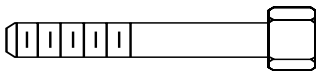
- | | | |
|---|--|--|
| 59 Nut Lock 1/4-20
8160001 Qty. 4 | 68 Washer 5/16
Fender
8172020 Qty. 4 | 52 Screw Cap 5/16-18 x 1 1/2
8041030 Qty. 4 |
| 60 Nut Lock 5/16-18
8160002 Qty. 4 |  |  |
| 65 Washer 1/4 SAE
8181008 Qty. 2 | 45 Handle Adj. W/
Grip 811019
Qty. 1 | 85 Screw Cap 1/4-20 x 1 1/2
8041008 Qty. 2 |
| 66 Washer 5/16 SAE
8172008 Qty. 2 |  |  |
| 71 Rod Battery Hold Down 790231 Qty. 2 | 70 Bracket Battery QL 790230 Qty. 1 | |
|  |  | |

For Mounting to a trailer

Screw Cap 5/16-18 x 2 3/4
8041035 Qty. 4

Nut Lock 5/16-18
8160002 Qty. 4

Washer 5/16 SAE
8172008 Qty. 5



Owner's Manual

Literature Checklist
Check Owner's Manual 790321

Literature Parts Bag

Check Literature Parts Bag 790319

Warranty Card

Check Warranty Card 400972

EU Declaration of Conformity & EU Distributor List

Check EU Declaration of Conformity & EU Distributor List 790162

INSTRUCTION LABELS

These labels should be included on your Quiet Loader. If any of these labels are damaged, replace them before putting this equipment into operation. Item and part numbers are given to help in ordering replacement labels.



Label Danger Keep Hands and Feet Away
Item 3
Part No. 400424



Label Ear Eye Breathing
Item No. 49 Part No. 890254



Label Danger Flying Material
Item No. 43 Part No. 810736



Label Warning Secure
Item No. 72 Part No. 790232



Label Read Owner's Manual
Item No. 50
Part No. 890301



Label Do Not Fill While Engine Is Hot
Item 1 Part No. 400268



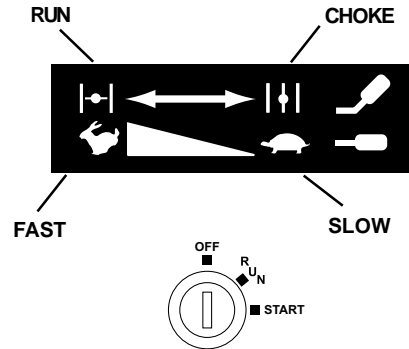
Label On Off
Item 77
Part No. 830276



Label QL Instruct/Warn
Item 18 Part No. 790142

CONTROLS

Control Panel



ENGINE LABELS

IMPORTANT ENGINE INFORMATION
THIS ENGINE MEETS U.S. EPA 2004 AND CALIFORNIA 2006 AND LATER EMISSION CONTROL REGULATIONS FOR S1 SOR2
FAMILY 1KHXS.7252GC
DISPLAY (CC) 674
MODEL NO. CH23S
SPEC NO. 76559
SERIAL NO. 3133205181

EMISSION COMPLIANCE PERIOD:
EPA CATEGORY A CARB: EXTENDED
THIS ENGINE IS CERTIFIED TO OPERATE ON UNLEADED GASOLINE

REFER TO OWNER'S MANUAL FOR SAFETY, MAINTENANCE SPECS AND ADJUSTMENTS
FOR SALES/SERVICE IN US/CANADA, CALL:

1-800-544-2444
www.kohlerengines.com

KOHLER engines
KOHLER CO. KOHLER WISCONSIN USA

OIL COOLER MAINTENANCE
Oil cooler must be kept free of debris.
Inspect and clean every 25 hours, more frequently under severe conditions.



OPERATION

INTENDED USE: This machine is designed for vacuuming leaves, grass clippings and other types of organic litter. Debris mixed with cans, bottles and small amounts of sand can be vacuumed; however, it is not this machine's primary purpose. Vacuuming cans, bottles and sand will affect the longevity of your machine.

Do not operate if excessive vibration occurs. If excessive vibration occurs, shut engine off immediately and check for damaged or worn impeller, loose impeller bolt, loose impeller key, loose engine or lodged foreign objects. Note: See parts list for proper impeller bolt torque specifications. (See trouble shooting section on page 12).



Like all mechanical tools, reasonable care must

be used when operating machine.

MOUNTING

Main unit



GENERAL: Unit must be securely mounted to a trailer, truck bed, or other similar surface before use. Do not use this unit in a freestanding position. Unit is not stable until it has been secured in place.

Secure unit by bolting through the base of the unit and through the mounting surface using 5/16" dia. bolts, with washers and locking nuts (see fig. 1)

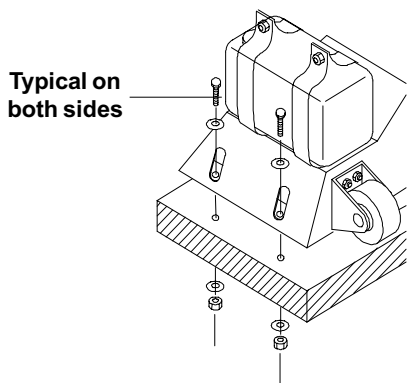


Fig. 1

MOUNTING: Unit can be mounted in various positions. Figure 2 illustrates the mounting options available when using the optional trailer (Billy Goat Part no. 790112) available from your Billy Goat dealer. The unit can be mounted to allow vacuuming from either sides as well as from the rear.

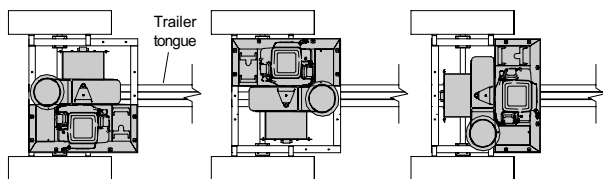


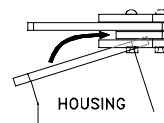
Fig. 2

MOUNTING

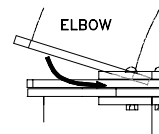
Exhaust elbow

INSTRUCTIONS:

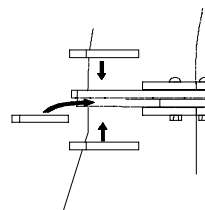
- 1) Remove the loose hardware from the clamp assembly so that there are 4 separate pieces (remaining clamp assembly, two half plates, and a plate split).
- 2) Slide the assembled plates over the housing flange. The flange should rest between the bottom plate and the plate split.



- 3) Slide the elbow over the plate spacer and center it in the clamp. The elbow flange should now be resting on the housing flange between the plate split and the top plate.

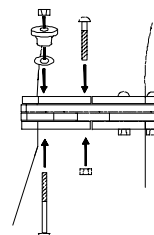


- 4) Insert the other plate split beneath the plate spacer so the holes align and the plate overlaps the flange on the elbow.



- 5) Secure the assembly with a plate half on top of the elbow flange and a plate half on bottom of the housing flange using 3, 1" carriage bolts and 3 lock nuts (removed hardware in step 1).

- 6) Tighten down the clamp with 2, 1 3/4" carriage bolts, 2 knobs, and 2 lock nuts (removed hardware in step 1).



OPERATION continued

STARTING



PUT OIL IN ENGINE BEFORE STARTING.

Inspect machine work area and machine before operating. Make sure that all operators of this equipment are trained in general machine use and safety.



ENGINE: See engine manufacturer's instructions for type and amount of oil and gasoline used. Engine must be level when checking and filling oil and gasoline.

ENGINE SPEED: Controlled by throttle lever on the vac housing. Under normal conditions, operate at minimum throttle to accomplish your current cleaning task.

INTAKE HOSE: Hose mounting assembly must be properly attached to vac housing and safety switch must be engaged before engine will start. Note: Any damage to the switch or wiring harness will prevent engine from starting.

CHOKE: Located on the vac housing as part of the engine control panel.

THROTTLE: Move throttle control to fast position.

KEY SWITCH: Turn to start position until engine begins to fire, immediately release the key to the run position.

Note: Do not hold key in start position more than 10 seconds per attempt.

IF YOUR UNIT FAILS TO START:

See Troubleshooting on page 12. Also see engine owner's manual.

OPERATION



**DO NOT OPERATE UNLESS
DEBRIS IS DISCHARGING
INTO AN ENCLOSED
CONTAINER**



KEEP ENGINE CLEAN OF DEBRIS

EXHAUST DIRECTION & DISTANCE: Exhaust direction and distance are controlled by the angle of the exhaust deflector and by rotation of the exhaust elbow. Adjust the angle of the exhaust deflector to control the distance that debris is discharged. Typically debris is aimed to discharge to the rear of the container. The direction of discharge is adjusted by loosening the knobs on the exhaust elbow clamp and rotating the elbow to the desired direction.

NOTE: Elbow is heavy. Use caution when adjusting. Never stand directly under the elbow while adjusting direction of exhaust.

⚠ Never adjust exhaust deflector angle or direction of discharge while unit is running.

⚠ Never direct exhaust into an area where bystanders may cross the path of the debris.

INTAKE OPERATION: With machine running and fully assembled, move the nozzle in sweeping motions over debris. Always allow air to flow into the nozzle along with the debris. Do not completely block the nozzle when vacuuming, it will reduce performance, and increase clogging (See figure 3).

For removal of heavier debris, or debris that is stuck to the ground, rock nozzle forward to concentrate suction power around the debris (See figure 4).

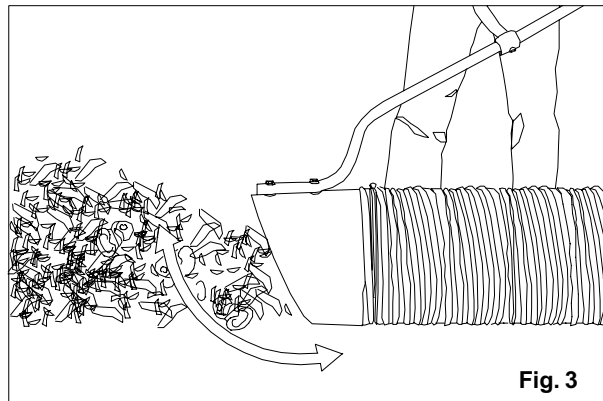


Fig. 3

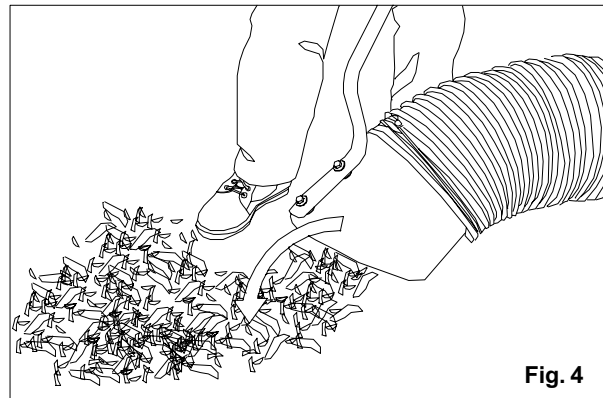


Fig. 4

HOSE CARE & USE TIPS

THE HOSE IS A REPLACEABLE WEAR ITEM.

FOR BEST HOSE OPERATION RESULTS, FOLLOW THESE RECOMMENDATIONS.

Be sure the hose is correctly installed by checking that the arrow printed on the hose indicating flow direction is pointing toward the vac housing.

Keep hose as straight as possible and avoid sharp bends during operation for best pick-up and to avoid clogs.

Never drag hose. Always remove and store hose before transporting unit.

Store hose straight and flat to maintain flexibility for next use.

To increase hose life, periodically rotate hose and reposition nozzle and coupler on front plate of unit. This increases hose life by keeping hose from wearing only on one side.

ADJUSTING HOSE BOOM:

Properly adjusting the boom will prevent most hose clogs from occurring and will maximize vacuum performance by keeping the hose straight and perpendicular to the housing (see fig. 5).

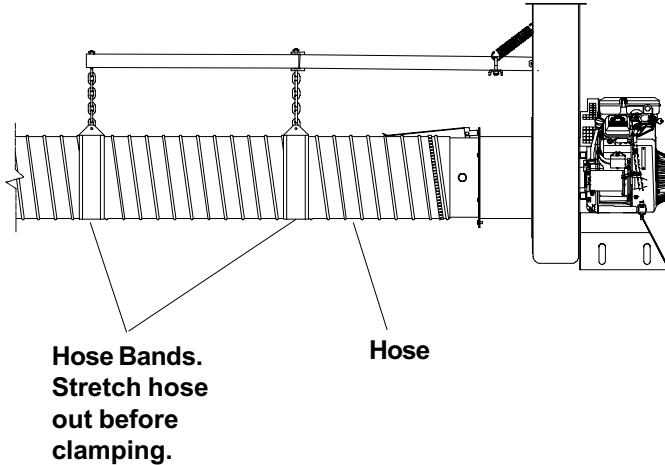


Fig. 5

UNCLOGGING A CLOGGED HOSE:



With engine running and unit secured to a trailer, truck bed, or other similar surface, fully stretch hose in a straight line to dislodge the clog. If the clog will not clear, turn unit off, and allow engine to come to a complete stop. Remove hose and manually clear hose clog.

NOTE: The clogged debris may be sharp. Always wear durable gloves when removing clog.

UNCLOGGING A CLOGGED HOUSING OR EXHAUST ELBOW:



Turn engine off and wait for impeller to come to a complete stop. Disconnect spark plug wires and battery cables. Remove the hose coupler from the housing and determine where the clog is located. If possible clear the clog through the intake opening. It may require removal of the intake adaptor (item 33) to allow access to clear the housing. If clog is in the elbow, carefully remove the elbow. Remove elbow by removing the knobs on the elbow clamp. Then remove 3 bolts so that the split plate can be taken out. Finally, the elbow can be removed by sliding it past the remaining attached clamp.

NOTE: Elbow is very heavy. Do not stand directly under elbow during removal.

Danger, the clog may contain sharp materials. Wearing durable gloves, clear the clog. Reconnect spark plug wire.

HANDLING & TRANSPORTING

The unit is equipped with small front wheels to allow for easier transportation to storage. With unit removed from its mounting, tilt unit forward toward the ground and use wheels to maneuver it into storage area.

STORAGE

Drain all fuel prior to storage.

⚠ Never store engine indoors or in enclosed poorly ventilated areas with fuel in tank, where fuel fumes may reach an open flame, spark or pilot light, as on a furnace, water heater, clothes dryer or other gas appliance.

If engine is to be unused for 30 days or more, prepare as follows:

⚠ Be sure engine is cool. Do not smoke. Remove all gasoline from carburetor and fuel tank to prevent gum deposits from forming on these parts and causing possible malfunction of engine. Drain fuel outdoors, into an approved container, away from open flame. Run engine until fuel tank is empty and engine runs out of gasoline.

NOTE: Fuel stabilizer (such as Sta-Bil) is an acceptable alternative in minimizing the formation of fuel gum deposits during storage. Add stabilizer to gasoline in fuel tank or storage container. Always follow mix ratio found on stabilizer container. Run engine at least 10 min. after adding stabilizer to allow it to reach the carburetor.

⚠ HOSE STORAGE: Store hose as straight and flat as possible. Storing hose in a covered area, out of sunlight and heat will prolong hose life. Do not store hose where it could be stepped on or where other objects could crush or damage hose.

MAINTENANCE



USE ONLY A QUALIFIED MECHANIC FOR ANY ADJUSTMENTS, DISASSEMBLY OR ANY KIND OF REPAIR.



WARNING: TO AVOID PERSONAL INJURY, ALWAYS TURN MACHINE OFF, MAKE SURE ALL MOVING PARTS COME TO A COMPLETE STOP.



DISCONNECT SPARK PLUG WIRES & BATTERY CABLES BEFORE SERVICING UNIT.



ENGINE: SEE ENGINE MANUFACTURER OPERATOR'S INSTRUCTIONS.



RECONNECT ALL GUARDS AND HOSE BEFORE STARTING ENGINE.



USE ONLY BILLY GOAT ORIGINAL EQUIPMENT PARTS FOR REPLACEMENT AND REPAIR

GENERAL

Replace any worn or damaged parts as required.

DO NOT operate if excessive vibration occurs. If excessive vibration occurs, shut engine off immediately. Remove spark plug wire and check for damaged impeller, loose impeller bolt, loose impeller key or lodged foreign objects. Refer to parts list (item 16) on page 11 for proper torque specifications.

ENGINE

Remove and Service foam air cleaner and inner air filter every 25 hours of use or every 10 hours or less for extremely dusty conditions (see engine manual).

Keep engine and engine cooling fins clean from dust and debris build-up.

When servicing engine refer to specific manufacturers engine owner's manual. All engine warranty is covered by the specific engine manufacturer. If your engine requires warranty or other repair work contact your local servicing engine dealer. When contacting a dealer for service it is a good idea to have your engine model number available for reference(See table page 1). If you can not locate a servicing dealer in your area you can contact the manufacturers national service organization.

To reach:

KOHLER ENGINES: 800-544-2444
www.kohlerengines.com

IMPELLER REMOVAL

1. Wait for engine to cool and disconnect spark plugs from the both sides of the engine.
2. Disconnect the negative battery cable (black) (item 12) from the battery.
3. Remove the hose coupler assy from the unit (item 36).
4. Remove the hose boom assembly.
5. Remove the intake housing assembly (item 33) using 1/2" socket and socket wrench to remove (12) locknuts and washers (item 60 & 63). Be careful to place intake assembly to the side without putting excess strain on safety switch wire harness
6. Remove impeller bolt and lock washer using 5/8" socket and impact wrench (see fig. 6).
7. Once bolt is removed impeller should slide out freely. If impeller will not slide free on crankshaft, obtain a 3/4"-10 x 3" bolt and thread it into the nut that is welded onto the center of the impeller and tighten slowly to push the impeller off the crankshaft.

Note: 3/4"-10 x 3" bolt is included in each impeller replacement kit or the bolt can be ordered from your local Billy Goat Dealer (part no. 790214).

8. When impeller is free of the engine shaft, align impeller with the opening and pull it straight out of the housing.
9. Using a new impeller bolt, washer, and lockwasher, reinstall new or repaired impeller in reverse order.

Note: Be sure spacer is in place behind impeller before tightening.

10. Tighten impeller bolt. Torque impeller bolt to [60 Ft. Lbs. (81.4 N-m)].
11. Repeat steps 2 through 5 in reverse order.
12. Reinstall spark plug wires.

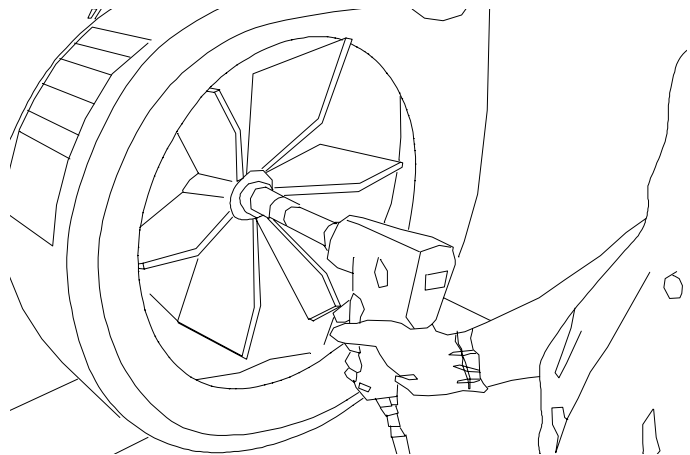


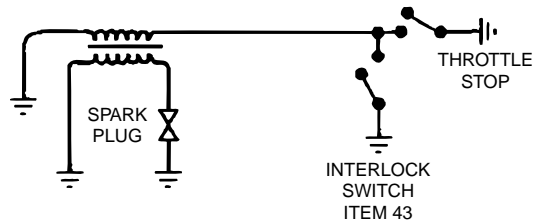
Fig. 6

Maintenance Schedule		Follow these hourly maintenance intervals.			
Maintenance Operation	Every Use	Every 5 hrs or (Daily)	Every 10 hrs	Every 25 hrs	
Engine (See Engine Manual)					
Inspect battery for damage or leak			●		
Check battery terminal for corrosion				●	
Check for excessive vibration		●			
Clean Hose	●				
Keep engine free of debris	●				
Inspect for loose parts		●			
Inspect for worn or damaged parts		●			

MAINTENANCE HISTORY	
Date of Service	Service Performed

INTERLOCK SYSTEM

With hose coupler installed (as shown in Fig. 4) the switch is open & engine is not grounded out, allowing engine to run.



Hose must be installed and switch lever must engage switch for engine to start.

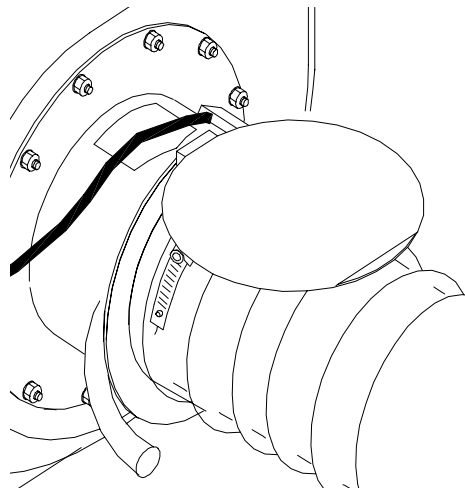
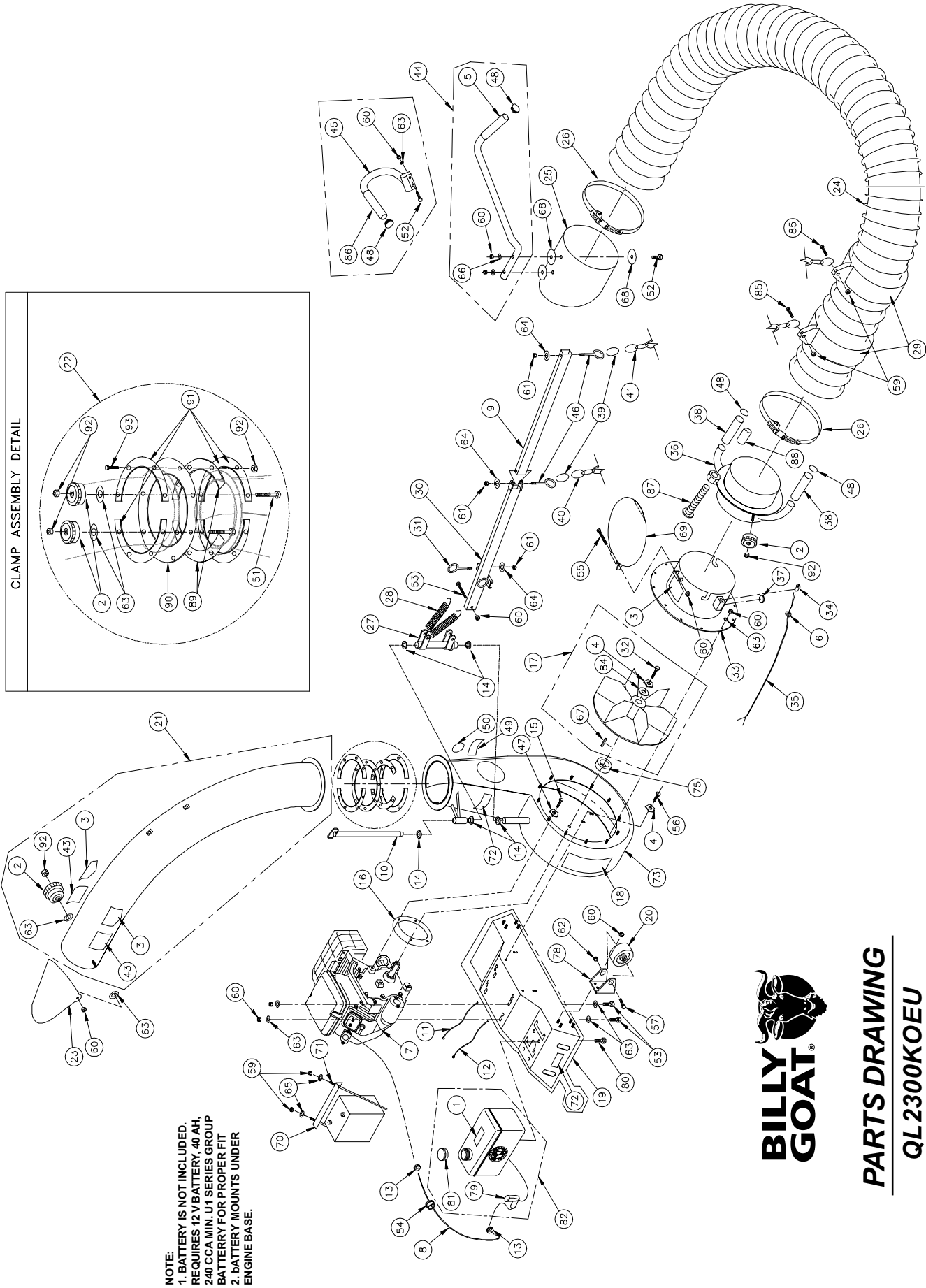
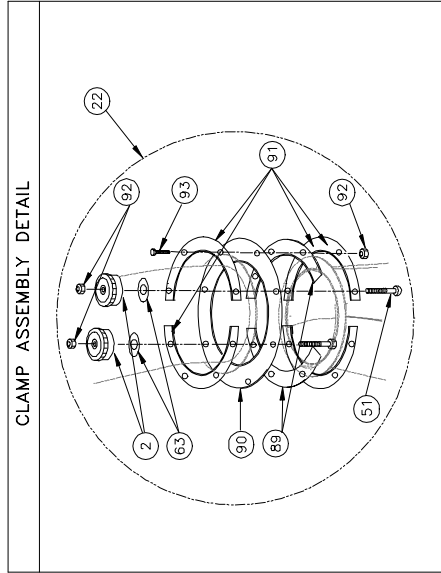


Fig. 8



NOTE:
 1. BATTERY IS NOT INCLUDED.
 REQUIRES 12 V BATTERY, 40 AH,
 240 CCA MIN. U1 SERIES GROUP
 BATTERY FOR PROPER FIT
 2. BATTERY MOUNTS UNDER
 ENGINEBASE.



**BILLY
 GOAT®**

PARTS DRAWING
QL2300KOEU

Parts List

* Denotes standard hardware item that may be purchased locally.

ITEM NO.	PART NO.	DESCRIPTION	QTY
1	400268	LABEL HOT ENGINE	1
2	400339	KNOB	4
3	400424	LABEL OPEI WARNING	3
4	850132	WASHER TWISTED LOCK 7/16"	5
5	400570	GRIP HANDLE 1" x 13"	1
6	500282	STRAIN RELIEF HEY CO 1244	1
7	790275	ENGINE 23 HP HORIZ. KOHLER COMMAND PRO	1
8	790129	LINE FUEL QL	1
9	790263	TUBE BOOM ARM QL	1
10	790271	PIN 5/8 X 15.5 QL	1
11	790132	CABLE BATTERY RED 26"	1
12	790133	CABLE BATTERY BLACK 10"	1
13	790134	CLAMP FUEL LINE	2
14	510185	BUSHING NYLON 0.625	5
15	790307	SCREWCAP 7/16-14 x 2" GR. 5	4
16	790293	PLATE RING SPACER QL KOHLER	1
17	790103-S	IMPELLER 16" x 1.12" ASSY QL (INCL. 4,32,67,84)	1
18	790142	LABEL QL INSTRUCT/WARN	1
19	790143-S	BASE ENGINE ASSY QL (INCLUDES 72)	1
20	790144	WHEEL 4" DIA. X 2" W/SPANNER	2
21	790145-S	ELBOW 8" ASSY QL (INCLUDES 2,3,43)	1
22	790255-S	CLAMP ASSEMBLY	1
23	790147	DEFLECTOR EXHAUST QL	1
24	810705	HOSE 10" x 12.5' INTAKE W/WEARSTRIP	1
25	811005	NOZZLE INTAKE 10" FORMED	1
26	810706	CLAMP HOSE 10"	2
27	790270	BOOM HINGE WA QL	1
28	790152	SPRING BOOM QL	2
29	810868	BAND HOSE BOOM 10" FORMED	1
30	790267	ARM BOOM WA QL	1
31	790291	BOLT EYE 3/8" x 2.5"	1
32	500188	SCREWCAP 7/16-20X2" GR.8 [TORQUE 60 ft.lb. (81.4Nm)]	1
33	790318	INTAKE HOUSING ASSY (INCL. 3,6,34,35,37,55,60,63,69)	1
34	890440	PLUNGE SWITCH	1
35	790305	HARNNESS WIRE ASSY QL23 KO	1
36	790320	HOSE INTAKE ASSY QL (INCL. 2,38,48,92)	1
37	811123	PLUG 3/4"	1
38	790179	GRIP 1" ID x 4" LG	2
39	811160	LINKGAGE 1/4" CHAIN	2
40	790306	CHAIN 5 LINKS	1
41	790189	CHAIN HANG HOSE QL	1
42			
43	810736	LABEL FLYING DEBRIS	2
44	811020	HANDLE NOZZLE W/ GRIP	1
45	811019	HANDLE ADJ. NOZZLE W/ GRIP	1
46	790290	BOLT EYE 3/8" X 5"	2
47	850132	WASHER LOCK 7/16 TWIST	4
48	890132	PLUG RD 1"	4
49	890254	LABEL EAR EYE BREATHE	1
50	890301	LABEL READ	1

ITEM NO.	PART NO.	DESCRIPTION	QTY
51	*8024044	BOLT CARRIAGE 5/16-18 x 2	2
52	*8041030	SCREWCAP 5/16-18 x 1 1/2	4
53	*8041031	SCREWCAP 5/16-18 x 1 3/4	5
54	790310	GROMMET 1" x 3/4" I.D.	1
55	*8024050	BOLT CARR. 5/16 - 18 x 3 1/2	1
56	*8041051	SCREW CAP 3/8 - 16x 1 1/4	4
57	*8041104	SCREWCAP 1/2-13 x 3 1/2"	2
58			
59	*8160001	NUT LOCK 1/4"-20 HEX Z/P	2
60	*8160002	NUT LOCK 5/16-18	31
61	*8160003	NUT LOCK 3/8	3
62	*8161044	NUT LOCK 1/2-13 THIN	2
63	*8171003	WASHER 5/16 FLAT CUT	26
64	*8171004	WASHER 3/8 FLAT CUT	3
65	8181008	WASHER 1/4 SAE	2
66	*8172008	WASHER 5/16 SAE	2
67	*9201125	KEY 1/4 x 2 3/4	1
68	*8172020	WASHER 5/16 FENDER	4
69	811183	DOOR FLAPPER INTAKE 10"	1
70	790230	BRACKET BATTERY QL	1
71	790231	ROD BATTERY HOLD DOWN	2
72	790232	LABEL WARNING SECURE	3
73	790105	HOUSING ASSY QL	1
74			
75	790311	SPACER - IMPELLER QL 23	1
76			
77			
78	790228	BRACKET WHEEL QL	2
79	790240	90 DEGREE ELBOW 1/8" NPT MALE X 1/4"	1
80	*8041026	SCREWCAP 5/16-18 X 3/4 HCS ZP	4
81	790258	CAP TANK FUEL 3 GAL	1
82	790257	TANK FUEL 3 GAL ASSY	1
83			
84	850443	WASHER PLATE IMPELLER	1
85	8041008	SCREWCAP 1/4-20 x 1 1/2	2
86	500267	GRIP HANDLE 1" x 7.5"	1
87	*8024216	BOLT CARRIAGE 3/4 - 10 X 6" LONG	1
88	811233	GRIP HANDLE 3/4" ID X 2" LONG BLACK	1
89	790254	PLATE CLAMP SPLIT	2
90	790253	PLATE CLAMP SPACER	1
91	790252	PLATE CLAMP HALF	4
92	8161041	LOCK NUT 5/16-18 THIN ZP	10
93	8024041	BOLT CARRIAGE 5/16-1 1/4" ZP	6

TROUBLESHOOTING

Before Requesting Service Review These Suggestions


Problem	Possible Cause	Solution
Engine will not start. (starter does not turn)	<ul style="list-style-type: none"> - Battery is low or dead. - Battery cable is disconnected or battery terminal is corroded. - Hose coupler is not installed, allowing interlock switch to operate. - Harness wire is bad or disconnected from interlock switch. 	<ul style="list-style-type: none"> - Charge battery or replace if the battery does not hold charge. - Clean battery terminal and cable then reconnect. - Install hose coupler securely to the unit and check whether interlock switch is engaged by lever. - Check harness wire connection and replace if necessary.
Engine will not start. (starter turns)	<ul style="list-style-type: none"> - Throttle stop switch in idle position. - Out of gasoline. Bad or old gasoline. - Spark Plug wire disconnected. - Dirty air cleaner. 	<ul style="list-style-type: none"> - Check throttle. - Check gasoline, Replace if gasoline is old. - Connect spark plug wire. - Clean or replace air cleaner. Or contact a qualified service person.
Will not vacuum or has poor vacuum performance.	Nozzle height too high or too low. Clogged hose or exhaust. Excessive quantity of debris.	Adjust nozzle position. Unclog hose or exhaust (see page 6). Allow air to feed with debris.
Abnormal vibration.	Loose or out of balance impeller or loose engine.	Check impeller and replace if required. Check Engine.
Engine is locked, will not turn over.	Debris locked inside impeller. Engine problem.	See page 6, Clearing a clogged impeller housing. Contact an engine servicing dealer for engine problems.

Engine Service and Warranty

Contact your nearest engine manufacturer's authorized servicing dealer.


Serial Plate

Record your machine model, serial number and date-of-purchase and where purchased



BILLY GOAT INDUSTRIES INC.

1803 S. Jefferson
P.O. Box 308
Lee's Summit,
MO 64063 / USA
Tel (816) 524-9666
Fax (816) 524-6983



110 dB

Model Serial No.

Unit(Weight) lbs. kg Engine Power kW rpm

Purchase Date _____ Purchased from _____

WARRANTY PROCEDURE

Please fill in the WARRANTY CARD and send the upper part to Billy Goat. The WARRANTY terms are stated on the lower part which remains with the user. Whenever a Billy Goat Machine is faulty due to a defect in material and / or workmanship, the owner should make a warranty claim as follows:

The Machine should be taken to the dealer from whom it was purchased or to an authorized Billy Goat dealer.

The owner should present the remaining half of the Warranty Registration Card, or, if this is not available, the invoice or receipt.

The Warranty Claim will be filled in by the authorized Billy Goat Dealer, who will send it with the faulty part to Billy Goat headquarters.

The Quality / Service department at Billy Goat headquarters will study the claim and parts and will notify their conclusions.

The decision by the Quality / Service department at Billy Goat headquarters to approve or reject a Warranty claim is final and binding.

Note: To process a Warranty Claim, it is necessary to quote the Model & Serial number who are printed on the Billy Goat Serial Plate.



BILLY GOAT INDUSTRIES INC.
1803 S.W. JEFFERSON STREET / LEE'S SUMMIT, MO 64082-2312 / USA
PHONE: 816-524-9666 FAX: 816-524-6983 www.billygoat.com